



Laboratory and Pilot Centrifuges and Dryers



Experts in Liquid-Solid Separation and Drying



Vertical Centrifuges

V 200-TP - V 500-TP

The vertical centrifuges Type V200 TP, V300-TP V400-TP and V500 TP have been designed for basic tests of centrifugal separation technology.

Customer benefits:

- Mobile design with small foot print
- Easy installation; "Plug and use"
- Ideal for Scale-Up
- Simplest handling
- CIP Cleaning
- Installation in isolator housing/glove box possible

Standard Specification:

Bowl diameter	200 - 500 mm
Filter surface	0,062 - 0,47 m ²
Nominal volume	1,5 - 30 l
Maximum load	2,0 - 36 Kg
Max. centrifugal force	900 - 2550
Material	1.4571 or 2.4602 (Alloy C22)
Surfaces in contact with product	Ra < 0,8 µm

Standard Configuration:

- Housing
- Base frame with bearing
- Sieve drum with removable collar
- Feedpipe
- Washing pipe
- Sight and light glass
- Control
- Variable speed drive

Options:

- Mobile construction
- ATEX execution
- CIP Cleaning
- Heating and cooling jacket
- Electro-Polished surfaces
- Several types of bowls (see fig. page 4)
- Filtrate reservoir
- Can be integrated in Isolator/Glovebox
- Further special equipment on request



Pilot Plant Centrifuges

H250-P -H500-P

The HEINKEL Inverting Filter Centrifuge, type F and HF, and the Horizontal Peeler Centrifuge, types H 250-P, H 400-P and H 500-P, are especially designed for demanding laboratory and test operations as well as production of small quantities.

Customer benefits:

- Small foot print
- Easy installation; "Plug and use"
- Ideal for Scale-Up
- Fully automated operation
- cGMP conformity

Standard Specification:

Bowl diameter	200 - 500 mm
Filter surface	0,098 - 0,39 m ²
Nominal volume	2,5 - 20 l
Maximum load	3,1 - 25 Kg
Max. centrifugal force	1500 - 2020
Material	1.4571 or 2.4602 (Alloy C22)
Surfaces in contact with product	Ra < 0,8 µm

Standard Configuration:

- Housing
- Base frame with bearing
- Sieve drum
- Feedpipe
- Washing pipe
- Discharging system
- Sight and light glass
- Control
- Variable speed drive

Options:

- Mobile construction
- ATEX execution
- CIP Cleaning
- Clean Room separation
- Electro-Polished surfaces
- Filtrate reservoir
- Filling systems
- PAC System (Inverting Filter Centrifuge)
- Removal of residual heel (Peeler Centrifuge)
- Further special equipment on request



summix[®]



BS-miniDRY[®]

Lab Dryer and Mixer

The **BS-miniDRY**[®] has specifically been designed for research and development with little amount of product. Tailor made for the requirements in the laboratory, it can be installed in a ventilation booth and be operated under many process conditions.

Customer benefits of the Lab Dryer with 0,15 to 1,5 Liter nominal volume:

- Flexible working volume from 10% to 100% of nominal volume
- Mobile and compact design
- Easy "plug and use" installation
- Excellent for Scale-Up
- Easy to operate
- CIP Cleaning
- Installation in ventilation booth

Standard Specification:

Material	1.4404 (SS316L) or 2.4602 (Alloy C22)
Working volume	Type DKL015: 0,15 - 1,5 Liter
Working pressure	1,0 - 0,5 barg
Working temp.	-20 - 120 oC
Heating/Cooling	Water/thermal oil at 0 - 6 barg
Surfaces	internal Ra < 0,8 µm

Basics:

- Heating/Cooling jacket
- Insulation jacket
- Dust filter
- Two drives with variable speeds
- Manual ball discharge valve
- Pressure and temperature sensors
- Manual sampler
- Height adjustable support frame

Options:

- Hybrid stirrer with central shaft mixer
- Vacuum System with solvent recovery
- Heating/Cooling system
- SPS Control with Lab software
- Operation via PC or Laptop
- Free programmable process control
- ATEX Configuration
- Additional options are available



BS-pilotDRY[®]

Pilot Dryer and Mixer

For processes in pilot plants and small scale production, the **BS-pilotDRY**[®] has been designed. It can easily be moved from one place to another and is fully equipped with the necessary instrumentation.

Customer benefits of the Pilot Dryer with 10, 30 and 50 liter nominal volume:

- Flexible working volume from 10% to 100% of nominal volume
- Mobile and compact design
- Easy "plug and use" installation
- Ideal for Scale-Up
- Easy to operate
- CIP Cleaning

Standard Specification:

Material	1.4404 (SS316L) or 2.4602 (Alloy C22)
Working volume	Type ML001 - ML005: 10 - 50 Litre
Working pressure	1,0 - 3,0 barg
Working temp.	-20 - 120 oC
Heating/Cooling	Water/thermal oil at 0 - 6 barg
Surfaces	internal Ra < 0,8 µm

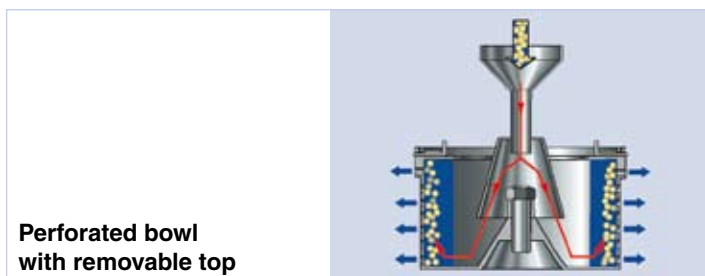
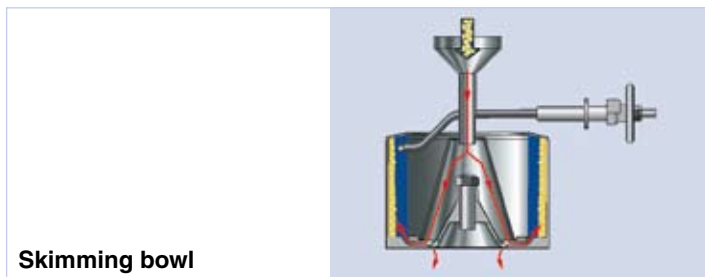
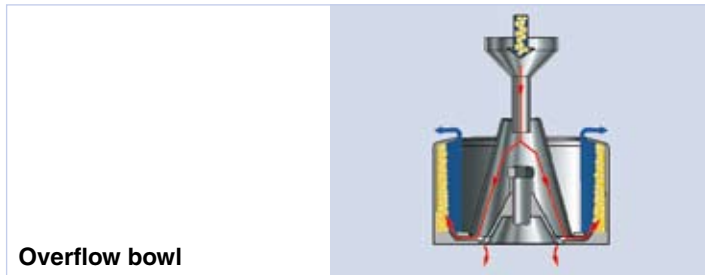
Basics:

- Heating/Cooling jacket
- Insulation jacket
- Dust filter
- Two drives with variable speeds
- Manual ball discharge valve
- Pressure and temperature sensors
- Manual sampler
- Height adjustable support frame

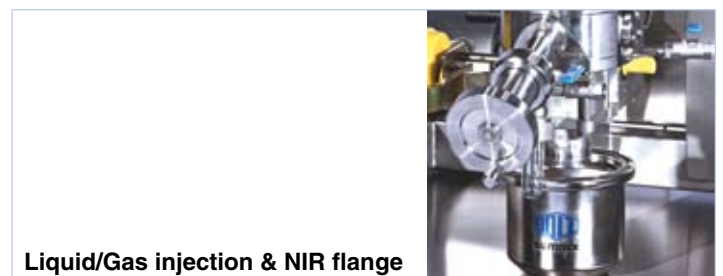
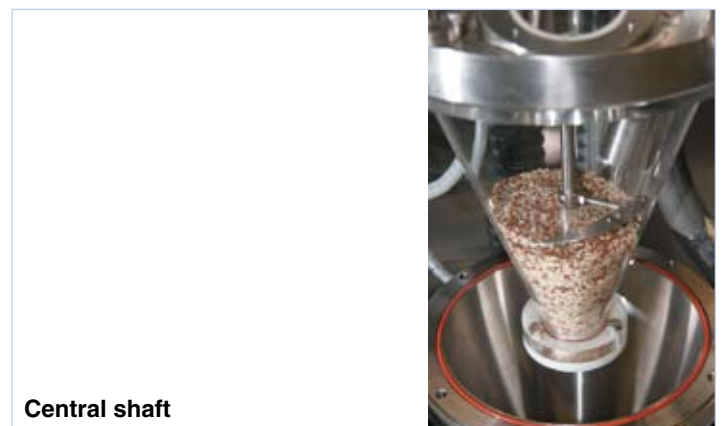
Options:

- Hybrid stirrer with central shaft mixer
- Vacuum System with solvent recovery
- Heating/Cooling system
- SPS Control with Lab software
- Operation via PC or Laptop
- Free programmable process control
- ATEX Configuration
- Additional options are available

Centrifuges



Dryers



HEINKEL Process Technology GmbH
 Ferdinand-Porsche-Straße 8
 74354 Besigheim / Germany
 Telefon +49 7143 9692-0
 Telefax +49 7143 9692-259
 Email info@heinkel.de
 www.heinkel.de



MPE Group GmbH BOLZ - SUMMIX
 Simoniusstraße 13
 88239 Wangen / Germany
 Telefon +49 7522 9162-0
 Telefax +49 7522 9162-105
 Email info@mpegroup.de
 www.mpegroup.de